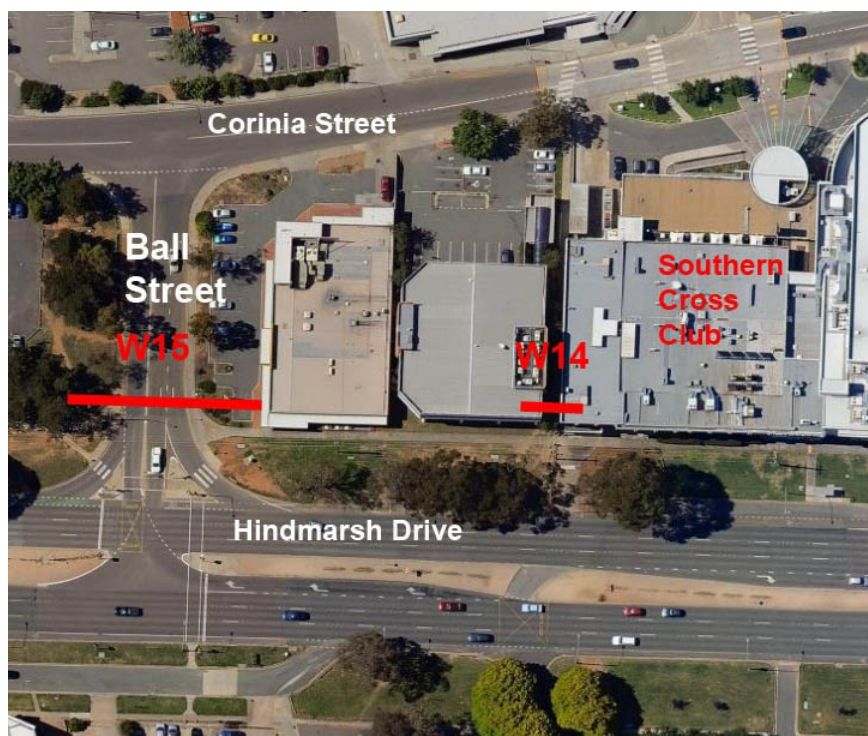


Pedal Power ACT Inc. Woden town centre cordon count Site W14 – count location and rules



Count location:

Site W14 – On the community path joining Hindmarsh Drive and Corinia Street (located between Callam Street and Ball Street) some 70 m east of Ball Street – it is between the buildings – do not confuse with Site W13 some 150 m further east towards Callam Street NOT on Hindmarsh Drive or the paths along Hindmarsh drive

Count:

All people riding bikes and walking into and out of Woden town centre between the buildings (on the path or otherwise) Crossing W14 red line in aerial photo

Count times:

07:00 to 10:00
16:00 to 19:00

Record counts on app or count tally sheets

We count rain, hail or shine (unless you are advised otherwise)

Counting rules

- **Count people walking and riding bikes** crossing the count location (as given above) – count there and nowhere else, regardless of if you think people have or have not been counted elsewhere. (The count locations make a complete cordon).
- **People riding bikes are:** those on pedal bicycles, recumbents, trikes, powered bicycles (not motorbikes), or link bikes, or on pavement tricycles, or walking their bikes. A couple on a tandem are two people. Children in trailers or bike seats are not riding bikes.
- **People walking are:** those walking, on roller skates and kick scooters and children riding in prams and trailers.
- **Male and female** – if in doubt use your best estimate (it is likely any errors will cancel out)
- **Start on time** at exactly 7.00 am or 4 pm as appropriate
- **Finish on time** at exactly 10 am or 7 pm as appropriate.
- Do not count people in sight who cross the count location before the start time or after finish time.
- Do not count yourself or anyone else associated with the count.
- Lookout for well intentioned, but misinformed, people who think they are helping by repeatedly crossing the count location to inflate the count. If you see one, only count them once and advise the supervisor.
- Do not advertise that you are counting people walking and riding (but do explain what you are doing if asked).
- We are only counting people who enter the cordon area via public roads, paths and spaces, not via residential or business premises – people who emerge from private property are NOT counted. There is one exception to this rule – when you know for certain that the someone has approached along ‘your’ road or path, and only cut the corner via private property just before reaching your control. For this reason, the counting location on each road or path is some distance away from the intersections with the roads that form the cordon boundary.
- **We are not trying to count as many people as possible – we are to count as *accurately* as possible!**