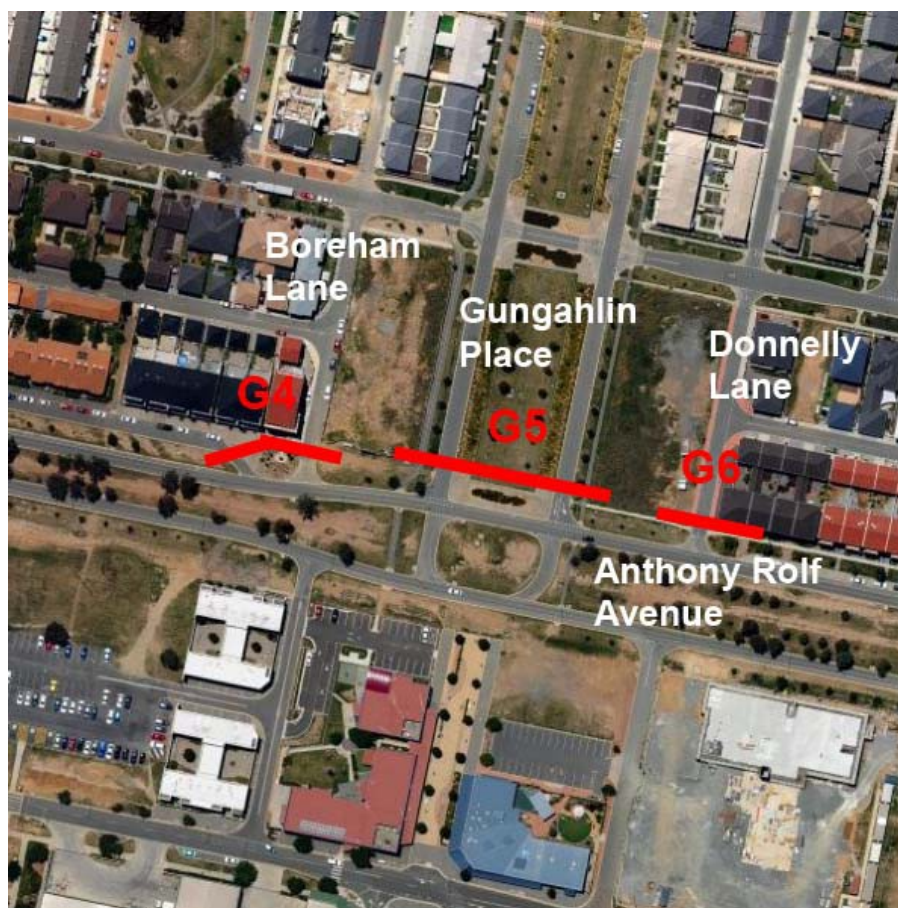


**Pedal Power ACT Inc. Gungahlin town centre cordon count
Site G6 – count location and rules**



Count location:

Site G6 - on Donnelly Lane and the adjacent footpaths to the north of Anthony Rolf Avenue (not along Anthony Rolf Avenue)

Count:

All people riding bikes and walking into and out of Gungahlin town centre on the carriageways and adjacent paths. Crossing G6 red line in aerial photo

Count times:

07:00 to 10:00
16:00 to 19:00

Record counts on app or count tally sheets

We count rain, hail or shine (unless you are advised otherwise)

Counting rules

- **Count people walking and riding bikes** crossing the count location (as given above) – count there and nowhere else, regardless of if you think people have or have not been counted elsewhere. (The count locations make a complete cordon).
- **People riding bikes are:** those on pedal bicycles, recumbents, trikes, powered bicycles (not motorbikes), or link bikes, or on pavement tricycles, or walking their bikes. A couple on a tandem are two people. Children in trailers or bike seats are not riding bikes.
- **People walking are:** those walking, on roller skates and kick scooters and children riding in prams and trailers.
- **Male and female** – if in doubt use your best estimate (it is likely any errors will cancel out)
- **Start on time** at exactly 7.00 am or 4 pm as appropriate
- **Finish on time** at exactly 10 am or 7 pm as appropriate.
- Do not count people in sight who cross the count location before the start time or after finish time.
- Do not count yourself or anyone else associated with the count.
- Lookout for well intentioned, but misinformed, people who think they are helping by repeatedly crossing the count location to inflate the count. If you see one, only count them once and advise the supervisor.
- Do not advertise that you are counting people walking and riding (but do explain what you are doing if asked).
- We are only counting people who enter the cordon area via public roads, paths and spaces, not via residential or business premises – people who emerge from private property are NOT counted. There is one exception to this rule – when you know for certain that the someone has approached along ‘your’ road or path, and only cut the corner via private property just before reaching your control. For this reason, the counting location on each road or path is some distance away from the intersections with the roads that form the cordon boundary.
- **We are not trying to count as many people as possible – we are to count as *accurately* as possible!**